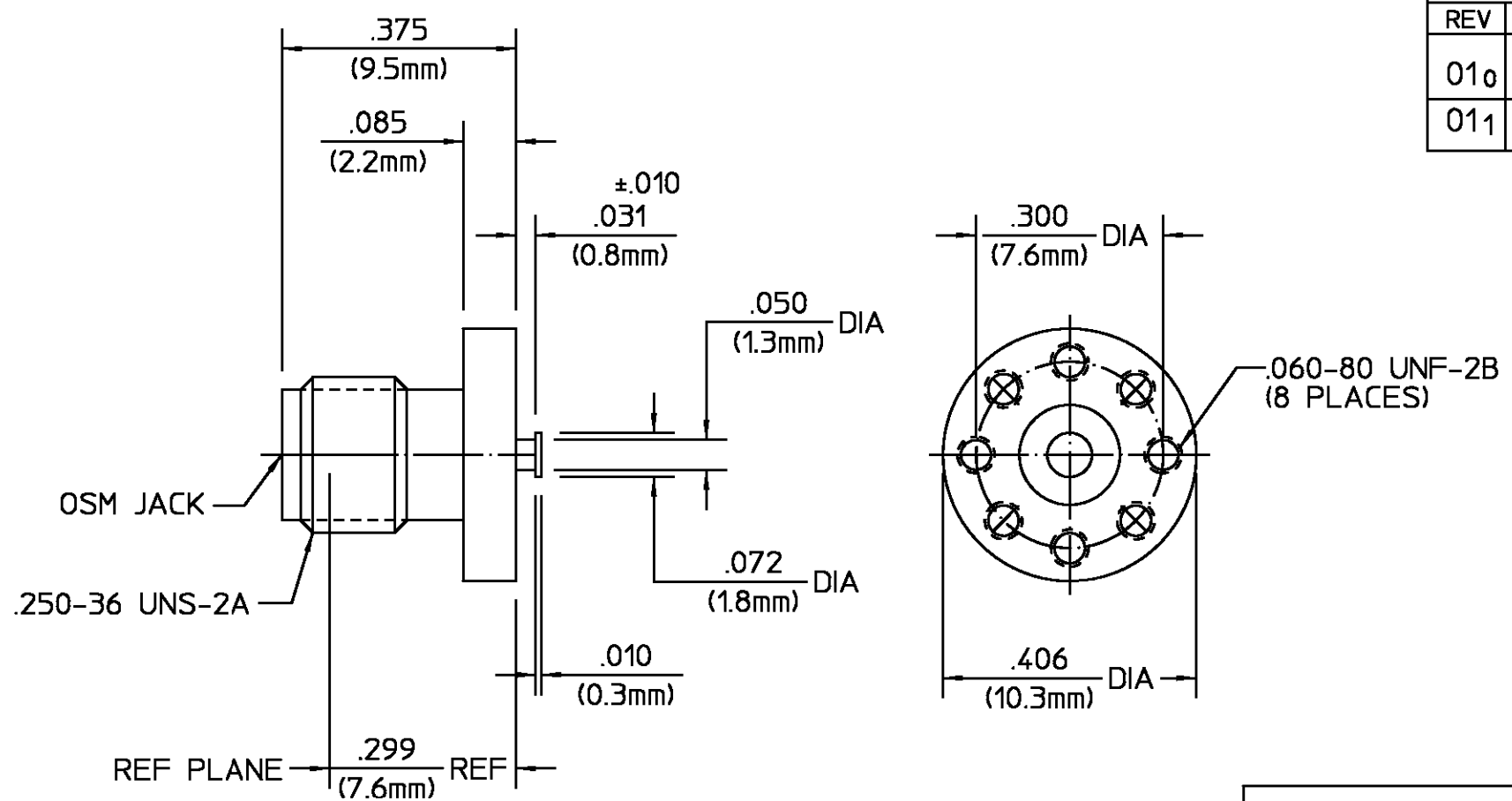


REVISIONS			
REV	DESCRIPTION	DATE	APPROVED
010	RELEASED		
011	REDRAWN IN CAD PER ECN 88-0678	EFH 6/28/90	KCM



ELECTRICAL	MECHANICAL	ENVIRONMENTAL
Nominal Impedance (Ohms) <u>50</u>	Interface Dimensions <u>MIL-STD-348, FIG. 310.2</u>	Temperature Rating <u>-65°C TO 125°C</u>
Frequency Range (GHz) <u>0-12.4</u>	Recommended Mating Torque <u>N/A</u>	Vibration - MIL-STD-202, Method 204, Condition B
Volt Rating (VRMS MAX) <u>335</u>	Mating Characteristics: Insertion (MAX Lbs) <u>3</u>	Shock - MIL-STD-202, Method 213, Condition I
VSWR <u>N/A</u>	Withdrawal (MIN Oz) <u>1</u>	Thermal shock - MIL-STD-202, Method 102, Condition B
Insertion Loss (dB MAX) $.03\sqrt{x}$ f(GHz)	Connector Engagement and Disengagement (In/Lbs MAX) <u>2</u>	Moisture Resistance - MIL-STD-202, Method 106, Except Step 7b (Vibration) Shall Be Omitted
RF Leakage <u>N/A</u>	Center Contact Captivation: Axial <u>N/A</u>	Corrosion - MIL-STD-202, Method 101, Condition B
Corona, 70,000 Ft (VRMS MIN) <u>250</u>	Radial <u>N/A</u>	
Dielectric Withstanding Voltage (VRMS MIN) <u>1000</u>	Cable Retention <u>N/A</u>	
Contact Resistance (Milliohms MAX)	Weight (Grams) <u>1.9</u>	
Center Contact <u>3</u>		
Outer Contact <u>2</u>		
RF High Potential (VRMS MIN @ 5 MHz) <u>670</u>		
I.R. (Megohms) <u>10,000</u>		

COMPONENT	MATERIAL	FINISH
HOUSING	STAINLESS STEEL PER ASTM-A484 AND ASTM- A582, TYPE 303	GOLD PLATE PER MIL-G-45204 OVER NICKEL PLATE PER QQ-N-290
DIELECTRIC	TFE FLUOROCARBON PER ASTM-D-1457, MIL-P-19468, AND FED. SPEC L-P-403	N/A
CENTER CONTACT	BERYLLIUM COPPER PER ASTM-196, ALLOY 173	GOLD PLATE PER MIL-G-45204 OVER COPPER PLATE PER MIL-C-14550

UNLESS OTHERWISE SPECIFIED DIMENSIONS ARE IN INCHES TOLERANCE ON	DATE <u>6/6/67</u>	AMP AMP Incorporated 140 Fourth Avenue Waltham, MA 02451-7599
FRAC DEC ANGLES <u>± 1/64 ±.005 ± °</u>	CHECKED BY <u>P.R.B</u> DATE <u>6/6/67</u>	
	APPROVED BY <u>D.NANIA</u> DATE <u>6/6/67</u>	

USE ASS'Y PROCEDURE	TITLE OSM SURFACE LAUNCH JACK STRIPLINE TURRET TERMINAL		
NO. AP. <u>N/A</u>	SIZE <u>B</u>	CODE IDENT NO. <u>26805</u>	REV <u>011</u>
	SCALE <u>5:1</u>	<u>2066-1321-00</u>	SHEET 1 OF 1